

# HAWAI'I INVESTMENT READY

FOOD SYSTEMS ACCELERATOR COHORT 6

---

October 17, 2024

Ka Waiwai ma Mō'ili'ili, O'ahu



# HAWAI'I INVESTMENT READY COHORT 6

## FOOD SYSTEMS ACCELERATOR

OCTOBER 17, 2024 • 1 PM - 5 PM

---

**Opening** Miwa Tamanaha, Co-CEO, Hawai'i Investment Ready

**Taylor Kellerman**, Board President, Hawai'i Rangeland Stewardship Foundation; Director, Diversified Agriculture and Land Stewardship, Kualoa Ranch

**Polipoli Farms** [Maui] - Leah Apana, Co-Owner

**Mokuwai Piko Poi** [Hawai'i Island] - Kahealani Kaaihili, Owner

**Sust'ainable Molokai** [Moloka'i] - Tehani Kaalekahi, ED

**Sarah Freeman**, Food Systems Specialist, County of Hawai'i R&D; Board Chair, Kohala Food Hub

**The Food Basket** [Hawai'i Island], Duryn Izumo, Managing Director of Development

**Kohala Food Hub** [Hawai'i Island] - Maya Parish, ED

**'Aina Ho'okupu o Kilauea** [Kaua'i] - Yoshito L'Hote, CEO

**Hawai'i Foodbank** [O'ahu & Kaua'i] - Marielle Terbio, VP of Strategy & Programs

**Supersistence** [Statewide] - Hunter Heavilin, Owner

**GoFarm Hawai'i** [Statewide] - Laura Ediger, Co-Director

**Intrapreneur: Agribusiness Development Corporation** [Statewide] - Wendy Gady, ED

**Hawaii Rangeland Stewardship Foundation** [Statewide] - Nicole Galase, Managing Director

**Molokai Heritage Trust** [Moloka'i] - Kawaipuna Kalipi, Land Back Manager

**Hawai'i Land Trust** [Statewide] - 'Olu Campbell, President & CEO

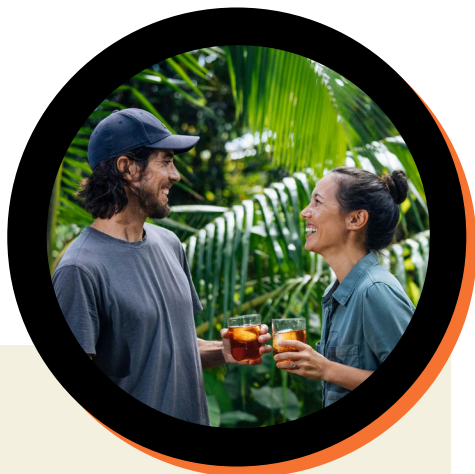
**Closing** Keoni Lee, Co-CEO, Hawai'i Investment Ready

---



# POLIPOLI FARMS

LEHIA APANA & BRAD BAYLESS



## Regenerative farm rooted in Indigenous wisdom

WAIIEHU, MAUI  
FOR-PROFIT  
ESTD. 2020  
GROWTH

**Polipoli Farms** honors the past to nourish the future, empowering the people and places of Nā Wai 'Ehā to thrive through regenerative economic opportunities rooted in aloha 'āina. Polipoli grows Polynesian plants in food forests in the same 'āina that fed generations of Native Hawaiians. By approaching farming from a native perspective, they strive to not only feed the community but also foster a cultural connection that feeds people's na'au (heart).

## IMPACT

Scalable and sustainable model for regenerative economic growth and cooperative community ecosystems:

- Supports a regional network of producers to access diverse markets, enhancing farmer revenue through equitable pricing, aggregation, processing, and consistent demand
- Promotes environmental stewardship, food security, and fire recovery via tree distribution and agroforestry
- Ensures customers have convenient access to high-quality cultural foods

## VALUE CHAIN



Production  
& Aggregation



Value Add

culturally rooted + healthy + convenient



 [polipolifarms.com](https://polipolifarms.com)



# MOKUWAI PIKO POI INC.

KAHEALANI KAAIHILI & BABA IGNACIO, JR.



## Reactivating Waipi'o's legacy of abundance

**HONOKA'A & WAIPI'O, HAWAII**  
**FOR-PROFIT**  
**ESTD. 1997**  
**GROWTH**

**Mokuwai Piko Poi** is a sixth-generation food business in Honoka'a, Hawaii Island. It began with backyard poi production and expanded to become one of the first certified kitchens on the Hamakua Coast. This enabled them to scale, support more farmers, and bring their poi products to grocery stores and restaurants. As they expand processing capacity to meet demand, Mokuwai can grow the market for kalo, nourish community, and enable more farmers to thrive.

### IMPACT

- Mentorship pilot program for 'ohana to adopt a lo'i and learn farming fundamentals with post-harvest buying commitment
- Convenient access to healthy, local, nutrient-dense food
- Community building & education through farm learning
- Kaukau4Keiki summer feeding program partnership with Kahumana to support 3,000 locally sourced meals per week to children in rural O'ahu

### VALUE CHAIN



Production  
& Aggregation



Community-Based  
Economic Development







# SUST'AINABLE MOLOKAI

TEHANI KAALEKAHI



Working to restore 'āina momona (thriving people and abundant land)

**MOLOKA'I**  
**NONPROFIT**  
**ESTD. 2010**  
**GROWTH**

**Sust'ainable Molokai** is a holistic community development organization committed to restoring 'āina momona by uniting traditional practices with responsible, modern sustainability solutions. Sustainable living and renewing connection to nature can restore the pono (balance) of the land and sea. In that spirit, they remain committed to each other as a community and seek pathways to sust'ainability.

## IMPACT

Current programs focus on strengthening food sovereignty, energy resilience, Land Back, sustainability, and climate change mitigation, including:

- Healthy food access: Food Bank & Pantry, Kūpuna 'Ai Box, Kaukau4Keiki
- Supporting local farmers and producers with a growing Mobile Market (food hub)
- Ag training, farm business support, infrastructure

## VALUE CHAIN



Community-Based  
Economic Development +  
'Āina, Equity & Access



Infrastructure, TA  
Food Hub,  
Markets





# THE FOOD BASKET INC.

DURYN IZUMO & KRISTIN FROST ALBRECHT



Connecting Hawai'i's food to its people

**HAWAI'I ISLAND**  
**NONPROFIT**  
**ESTD. 1989**  
**GROWTH**

The Food Basket aims to end hunger in Hawai'i County by creating a sustainable model for food security, thriving agriculture, and community health. They support local farmers, kupuna, and SNAP-EBT cardholders through innovative pathways to access high-quality food. Their holistic approach includes 10 programs integrating immediate assistance with long-term solutions, emphasizing sustainable food systems and nutrition education.

## IMPACT

- Grow and sustain local businesses and farms while reducing reliance on imports
- Disaster response and mitigation
- Feed over 80,000 food-insecure residents (40% of Hawai'i Island households)
- 24.5-acre Agricultural Innovation Park will support farmers with market development, infrastructure access, training programs, and enhanced resources

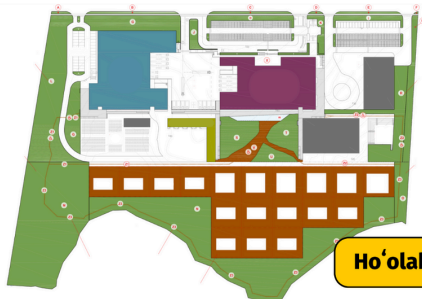
## VALUE CHAIN



Aggregation & Distribution



Equity & Access, Infrastructure





# KOHALA FOOD HUB

MAYA PARISH & SARAH FREEMAN



Growing local food infrastructure, coordination, and access for a resilient & abundant Kohala

**NORTH KOHALA, HAWAI'I ISLAND**  
**NONPROFIT**  
**ESTD. 2019**  
**GROWTH**

**Kohala Food Hub** is strengthening Hawaii's food system by offering vital value-chain infrastructure and sustainable economic development for North and South Kohala. They support farmers and food businesses while enhancing community access to fresh, local food. Their online market, multi-farm CSA, partnered programs, free food distributions, shared-use affordable commercial kitchen and equipment rentals, and wholesale accounts connect producers with residents, businesses, and visitors.

## IMPACT

KFH provides essential services to producers and the community, driving job creation, economic activity & improved local food access:

- Value chain infrastructure for 119+ local producers, including market and distribution, affordable commercial kitchen access, and technical assistance
- Online marketplace with fresh local food, SNAP processing
- Free, healthy food support

## VALUE CHAIN



Aggregation & Distribution Infrast



Equity & Access



[kohalafoodhub.com](http://kohalafoodhub.com)



# 'ĀINA HO'OKUPU O KĪLAUEA

YOSHITO L'HOTE & JEREMY BURNS



Building an economically diverse and food secure Kaua'i through stewardship & aloha 'āina

**KĪLAUEA, KAUA'I**

**NONPROFIT**

**ESTD. 2015**

**PROOF OF CONCEPT**

'Āina Ho'okupu O Kīlauea facilitates place-based solutions to economic, social, and food systems challenges faced by Kīlauea and the greater Hawai'i community. Their Kīlauea Community Agricultural Center contributes to island food security and a healthy, stable, balanced local agricultural economy.

## IMPACT

Regenerative economic development by seeding a vertically integrated ag center to provide:

- Reliable access to high-quality local foods
- Community food security through free farmer boxes
- Comprehensive support for producers, from land access to market, including aggregation and technology
- Infrastructure assistance for beginner and scaling farmers

## VALUE CHAIN



Production  
& Aggregation



Community-Based  
Economic Development



[ainahookupuokilauea.org](http://ainahookupuokilauea.org)





# HAWAI'I FOODBANK

MARIELLE TERBIO & AMY MILLER



Nourishing our 'ohana today while working to end hunger tomorrow

O'AHU & KAUA'I  
NONPROFIT  
ESTD. 1983  
**GROWTH**

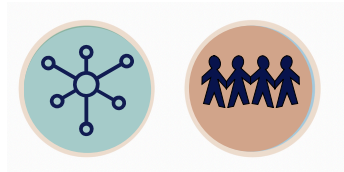
Hawai'i Food Bank has fed the community for 40 years and serves 50% more people today than before the pandemic. They believe consistent access to safe and healthy food is a fundamental human right, partnering with 225 agencies to increase equitable access to nutritious food and support local farmers and producers.

## IMPACT

HFB's infrastructure and buying power contribute to a more resilient and food-secure Hawai'i.

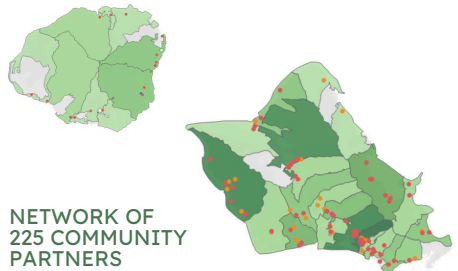
- Farm to Foodbank: Since 2020, \$10M+ invested in 40+ farms & food hubs. That's ~8M pounds of local produce and protein
- 1 in 4 keiki are food insecure: Food 4 Keiki programs work address this issue with nutritious food
- HFB helps over 120K 'ohana, kupuna, and keiki per month

## VALUE CHAIN



Aggregation

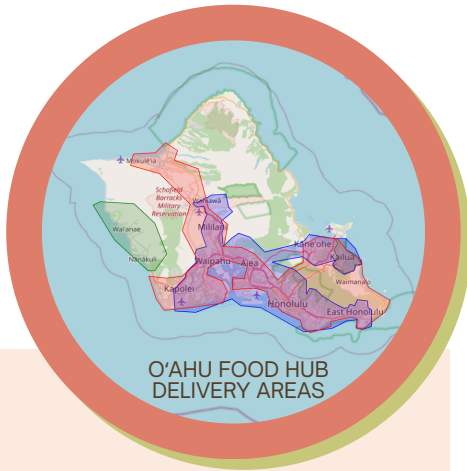
Equity & Access



NETWORK OF  
225 COMMUNITY  
PARTNERS

# SUPERSISTENCE

HUNTER HEAVILIN



Leveraging data for collaboration and collaboration for building food system resilience

STATEWIDE  
FOR-PROFIT  
ESTD. 2008  
GROWTH

**Supersistence** is a consultancy specializing in agrofood systems planning. They support enterprises, networks, and communities through data-driven planning, policy, and collaborative governance. By connecting data with collective action, Supersistence helps clients navigate social and ecological systems, driving food systems change.

## IMPACT

Empowering sustainable, equitable & resilient food systems:

- Providing enterprises, networks & communities with data-driven tools and governance strategies for collective action
- Integrating analysis with network-driven collaboration to empower stakeholders
- Supporting the development of policies to increase food security, improve environmental outcomes, and sustain agricultural communities

## VALUE CHAIN



Coordination & Networks



Governance



Thomas Heaton/Civil Beat/2024



supersistence.org



# GOFARM HAWAII

LAURA EDIGER & JANEL YAMAMOTO



## Growing Hawai'i's farmers

**STATEWIDE  
NONPROFIT  
ESTD. 2003  
GROWTH**

**GoFarm Hawai'i's** mission is to enhance Hawai'i's food security and economy by increasing the number of sustainable, local agricultural producers. We offer hands-on practical training in production and business skills, and consulting services to farm and food businesses. GFH meets the needs of aspiring and existing farmers along the continuum from farm startup through scaling and succession planning.

## IMPACT

Connecting new and existing farmers and agribusinesses with resources and partners to build a thriving agricultural community:

- Technical assistance in finance, marketing, and business planning.
- Classroom and field learning to equip farmers with the skills needed for production farming
- Workforce development for farms and the food system
- Increased number and financial success of farms and farmers
- 600 program graduates

## VALUE CHAIN



Technical Assistance  
& Networks



Land Access



# AGRIBUSINESS DEVELOPMENT CORPORATION

WENDY GADY & JASON OKUHAMA



Growing Hawai'i's future through sustainable agribusiness

STATEWIDE  
NONPROFIT  
ESTD. 1994  
STARTUP

**The Agribusiness Development Corporation** was established to guide Hawai'i's shift from sugar and pineapple to a thriving food system of diverse crops. With thousands of acres of fertile land and irrigation infrastructure, the ADC aims to enhance the local economy, create jobs, and reduce reliance on imports. Promoting sustainable practices, developing commercial exports, and facilitating land and infrastructure access play a pivotal role in ensuring the economic, environmental, and social benefits of Hawai'i's people through a dynamic and forward-thinking agribusiness program.

## IMPACT

Preserving natural resources, promoting local ag, and building community resilience by investing in conservation and sustainable practices:

- Environmental: Fire mitigation, fresh fruit production, reduced reliance on imports
- Economic: Longer leases, cost savings (water, labor, electricity), increased economic stability
- Community: Access to fishing and water resources, support for local agriculture

## VALUE CHAIN



Infrastructure



Land & Capital Access







# HAWAII RANGELAND STEWARDSHIP FOUNDATION

NICOLE GALASE & TAYLOR KELLERMAN



Sound stewardship through  
advocacy and education

STATEWIDE  
NONPROFIT  
ESTD. 2014  
PROOF OF CONCEPT

**Hawaii Rangeland Stewardship Foundation** promotes sound rangeland stewardship and healthy ecosystem management by building a network of aligned and engaged stakeholders and integrating science, technology, and expertise. With 20% of Hawai'i's lands in rangeland, ranchers and resource managers positively impact practices that honor the past, present, and future of these lands.

## IMPACT

Well-managed rangelands address pressing challenges:

- Environmental: Invasive species control, climate change mitigation, watershed protection, endangered species conservation, and carbon sequestration
- Economic: Increase income for ranchers and landowners, reduce disaster risks, and expand opportunities
- Community: Support local protein production and collaborative solutions across sectors and industries

## VALUE CHAIN



Network Coordination,  
Intermediary



Advocacy,  
Enabler



[hirangelandstewardship.org](http://hirangelandstewardship.org)



# MOLOKAI HERITAGE TRUST

KAWAIPUNA KALIPI



‘Āina is no small legacy

**MOLOKA’I  
NONPROFIT  
ESTD. 2020  
STARTUP**

**501(C)(3)  
SUSTAINABLE MOLOKAI**

**Molokai Heritage Trust** is a community-based non-profit formed to acquire and provide oversight in the management of Moloka’i Ranch lands. This community-owned entity is dedicated to acquiring, governing, and stewarding this Land Back effort.

## IMPACT

Providing a pathway towards a regenerative island economy model:

- Community planning and engagement
- Developing alternative economies focused on land stewardship, subsistence, and community-aligned jobs
- Benefiting farmers, fishermen, and ranchers by providing access to land, resources, and education
- Helping address historical injustices and creating a more sustainable future for the island

## VALUE CHAIN



Land Access



Community-Based  
Economic Development



[molokaiheritagetrust.org](http://molokaiheritagetrust.org)



# HAWAI'I LAND TRUST

'OLU CAMPBELL & ANGELA BRITTEN



Protecting and stewarding the lands that sustain Hawai'i and perpetuating Hawaiian values by connecting people to 'āina

**STATEWIDE  
NONPROFIT  
ESTD. 2011  
GROWTH**

**Hawai'i Land Trust (HILT)** is Hawai'i's islands-wide land trust that is both a 501(c)3 nonprofit and a nationally accredited land trust. We protect lands integral to Hawai'i's well-being and character, upholding our kuleana to these lands and the communities they are in through thoughtful stewardship that deepens community connection to and builds reciprocal relationships with 'āina.

## IMPACT

- Holistic approach protecting 22,500+ acres across Hawai'i through 8 community preserves
- 52 conservation easements for agricultural, ecological & cultural preservation on private lands
- Active stewardship removes invasive species & marine debris and plants native plants & crops
- 'Āina-based youth programs & internships grow future stewards
- Safeguard coastline & wahi kupuna, prioritizing lands that grow healthy food for Hawai'i's people

## VALUE CHAIN



Access



Stewardship  
& Connection



## HIR TEAM, COACHES & KĀKO'O

### HIR TEAM

Charly Kleissner

Chloe Seto Hartwell

Debbie Gowensmith

Kanoe Enos

Keoni Lee

Kim Moa

Lisa Kleissner

Margaret Peebles

Megan Talley Womble

Miwa Tamanaha

Neil Hannahs

Pat Ohta

Tyler Takahashi

### COACHES, GUEST SPEAKERS & KĀKO'O

Aaron Ellis

Abigail Perrin

Ag Finance Hui

Aileen Suzara

Ari Datta

Blake "Brutus" La Benz

Bobby Alcain

Claire Sullivan

Dana Shapiro

Dexter Kishida

Ed & Mahealani Wendt

En Young

Eric Bowman

Esther Park

Funder Hui

HIR Cohort V

John Villiarimo

Justin & Kerri Luna  
& 'Ohana

Kahanu Garden

Kaile Luga

Kau'i Kanaka'ole

Ken Tyson

Kim-Hee Wong

Lehua Park

Lia Sheehan

Lisa Kimura

Maka Wendt

Marisa Hayase

Matt Yamashita

Michael Duarte

Misty Cordeiro-Cary

Neora Myrow

Nicole Milne

Pia Chock

Ryan Wendt

Usha Kilpatrick

### CREATIVE CREDITS

Moa Photo

Douglas Peebles Photography





## MAHALO NUI

KL Felicitas Foundation  
Kamehameha Schools  
The Harry and Jeanette Weinberg Foundation  
Ceres Trust  
The Kresge Foundation  
Hawai'i Community Foundation  
Stupski Foundation  
Atherton Family Foundation  
Kaiser Foundation Health Plan, Inc.  
'Āina Aloha Economic Futures  
Feed The Hunger Fund  
Hawai'i Pacific Health  
Swayne Family Fund  
Ulupono Initiative  
Hawai'i Leadership Forum  
Hawai'i Good Food Fund  
Cienega Capital  
Mission Driven Finance  
#NoRegrets Initiative  
Arizona State University  
'Ōiwi TV  
Waiwai Collective

## HIR FOOD SYSTEMS FUNDER COHORT

Atherton Family Foundation	Hawai'i Good Food Fund
City & County of Honolulu	The Healy Foundation
Commercial & Business Lending	Johnson Ohana Foundation (JOF)
County of Hawai'i R&D	Kaiser Permanente
Elemental Excelsior	Kamehameha Schools
Feed the Hunger Fund	Kōkua Hawai'i Foundation
GoFarm Hawai'i	Nuestro Futuro Foundation
Harry & Jeanette Weinberg Fdn.	Slow Money Hawai'i
Hawai'i Community Foundation	Stupski Foundation
Hawai'i Department of Agriculture (HDOA)	Ulupono Initiative
	USDA, Rural Development





## HAWAII INVESTMENT READY

Hawai'i Investment Ready has been field-building the impact ecosystem in Hawai'i for over a decade—innovating and experimenting to shift the way money moves towards restoring reciprocity and regenerative abundance to Hawai'i's economy.

The Food Systems Accelerator represents HIR's evolution to better target systems-level challenges and opportunities by strengthening and resourcing the system as a whole. Dual cohorts bring together enterprises across the value chain with funders who share a common objective of a viable and resilient local food system. To be more intentional about how we collectively move money at a systems level, we are building a strong network to catalyze transformation from the roots up. By bringing these groups together we seed deeper relationships and increase our collective capacity for collaboration and problem-solving.

Whether you are on the stage or in the audience today, everyone can play a role in supporting a healthy, vibrant Hawai'i. Mahalo nui for joining us.

**[WWW.HIREADY.NET](http://WWW.HIREADY.NET)**